

RISING ALONG THE POTOMAC

Business Manager
George Hogan
and Dion McNair



Justin Mobley and
President Tom Myers



Derrick Howerton and
Sergio Cordova



Oscar
Servellon



From left, Nick Chandler of Rosendin Electric, Derek Morgan, Business Manager George Hogan, Marcus Avelleyra, Mike Norman of Rosendin Electric, and President Tom Myers



From left, Santos Hernandez, Mary Madden of Whiting Turner, Business Manager George Hogan, Tony Fleming, and Steve Blankenship

MGM National Harbor is the Most Recent Beneficiary of the Fine Skills of Local 26



Tyrone Sutson, Jr.



Craig McCoy

As you round the Capital Beltway in Oxon Hill in Prince George's County, MD, you can't help but be awestruck by the dramatically changing skyline along the Potomac River. First came the Gaylord National Resort and Convention Center and the National Harbor development. Now rising majestically is the MGM National Harbor Hotel and Casino.

This prime piece of real estate was once a plantation and when the plantation house burned down in 1981, the land went up for sale. The land changed ownership a few times and was rezoned for mixed use development. Many things were considered for this land but, ultimately, it was the Gaylord Hotel that became the first anchor at National Harbor. Local 26 was honored to build the Gaylord Hotel from 2006 to 2008 (now the largest hotel between New Jersey and Florida) and even more honored to still be showcasing their skills today all along National Harbor as development continues.



The Local 26 crew working for Rosendin Electric at MGM Casino



George Lay



President Tom Myers, Ron Canady, Nathan Headspeth, and Business Manager George Hogan



Anwar Bammou and Al White



MGM NATION



Trina Brown

Frank Fisher and Business Manager George Hogan



Stephen White



From left, Sean Perry, Bill Sommers, Business Manager George Hogan, Donte Clemons, Shah Raufi, and Johnny Mack



President Tom Myers, Charles Blackwell, James Trunnell, and Business Manager George Hogan



Dan Grabill



Business Manager George Hogan and German Vasquez



President Tom Myers and David Thurston



Ali Shahnampour

CASINO AT HARBOR

The latest work of Local 26's members at National Harbor is the MGM Hotel and Casino which will be Maryland's sixth casino. The MGM, with its sleek architectural design, quietly makes its presence known as a classy resort destination, one that will have passersby curious to explore and guests eager to revisit.

The MGM Hotel and Casino was a long time in the making, four years to be exact. In the 2012 election, Maryland voters passed a measure to expand gambling in the state. Previously, the only gaming allowed was slot machines. But, passage of Question 7, which generated great debate leading up to the election, allowed for gaming tables to create a full-fledged Las Vegas-style casino and cleared the way for MGM to plant roots in the Washington, DC, area. In fact, the battle for and against Question 7 came down to two parties, MGM, which reportedly poured an unprecedented \$90 million into the campaign for passage of the measure, and Penn National Gaming, which poured \$42 million into the campaign to prevent passage because another large gaming destination in the DC area would likely hurt Penn National's slot machine gaming locations at places like Charles Town, WV. The ballot measure was fully supported by then Maryland Governor Martin O'Malley and Prince George's County Executive Rushern Baker for its promise of job creation. The measure passed and MGM was on its way to construction.

The hotel and casino will ultimately create permanent jobs for about 4,000 people, from dealers, bartenders and waiters, to chefs, hotel front desk agents, supervisors, accountants, housekeeping staff and retail managers. And, the company has pledged to have 50 percent of its workforce come from Prince George's County by the fifth year of operations.

But, before any of the 4,000 permanent employees can take their post, about 1,500 construction workers have been plying their skills since May 2014 to bring this project to fruition for a late 2016 opening. Among those 1,500 workers are about 300 highly skilled Local 26 members (at peak) working for Rosendin Electric on the casino portion of the project. This team has been led by General Foremen John Blakenship, Victor Moore, Derrick Coleman, Jeff Adams, Santos Hernandez, Allen Potts, Randy Boucher and Phil Wilson.



Doug Hickman



Jason Ketchel and Business Manager George Hogan

Marcus Parker



Glenn Laser, Business Manager George Hogan, Robert Short, and President Tom Myers



Kneeling, Robert Short and Will Gulledge. Standing, from left, Luis Ayala, Amos Kear, Sr., Michael Massenburg, and Dion McNair



General Foreman Jeffrey Adams and President Tom Myers



Morris Schenk



Mike Sabatino, Jim Hatt, Jorge Zalles, and Anthony Orsino



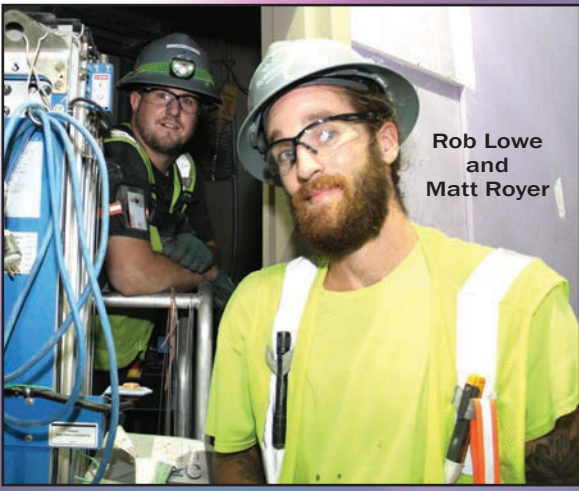
Paul Gregory



Andrew Farquhar



Business Manager George Hogan, Derrick Coleman, President Tom Myers, and Erick McCowin



Rob Lowe
and
Matt Royer



John
Washington



Glenn
Wright

MGM NATION



Randy Boucher and Business Manager
George Hogan



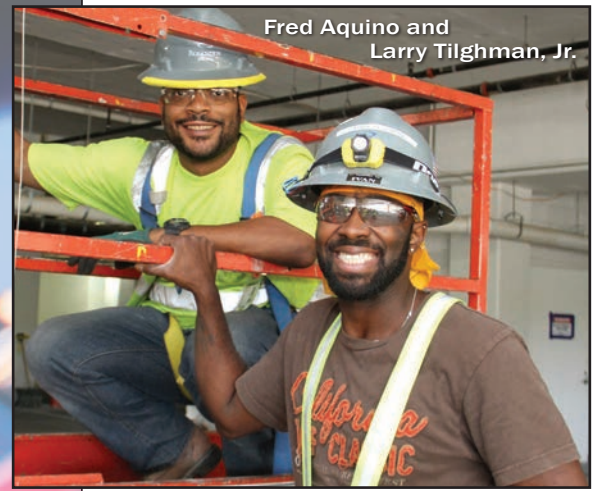
Jaime Zuleta and Luis Calderon



Superintendent Steve Kubanda, Business Manager George Hogan,
and Stephen Kubanda



Henry Ipanaque, Business Manager George Hogan, and Pierre Duverne



Fred Aquino and Larry Tilghman, Jr.

CASINO AT HARBOR



Oliver Aldred and Joey Smith



Jose Rodriguez, Richard Baca, and Ernesto Bugayong

Rosendin Electric came on site in March 2015 and has been working multiple shifts to complete the 125,000-square-foot casino, which also includes work performed on the Level 2 entertainment area, back of house areas, parking garage, roof and landscaping. Upon completion, the crew will have worked on over 3 million square feet, installing seven miles of linear LED lighting, 25,000 standalone light fixtures and over five million feet of conductors. They will also have been responsible for 600V distribution, power, grounding, lighting, lighting control, lightning protection, theatrical lighting, and the low voltage wiring systems raceway for services such as audio/visual, security and data. In total, this project is expected to require about 500,000 manhours.

Not only is the casino beautiful, it is also environmentally friendly. It has earned one of the highest LEED (Leadership in Energy and Environmental Design) certifications from the U.S. Green Building Council for its attention to such things as sustainability of the site, water efficiency, energy and atmosphere, materials and resources, indoor environmental quality and innovation in design.

According to the Washington Post, the total cost to build the hotel and casino is expected to be \$1.4 billion with a grand opening scheduled for December 8, 2016. And, the hotel and casino are also expected to impress everyone who walks through the doors. The casino is bright and modern, unlike many casinos, delivering an artistic feel throughout. In fact, legendary folk singer Bob Dylan crafted an iron archway to greet visitors as they enter the MGM casino. Similarly, the hotel will benefit from many other artistic elements, specifically numerous works from DC-area artists.

The MGM, with its 24-stories of hotel space including over 300 rooms, its 4,000 person capacity facility for conventions, boxing matches, concerts and other events; and its 3,600 slot machines and 140 table games, is certain to be a prime destination for visitors to the DC area and locals alike. And, just like the other properties and resort destinations at National Harbor, Local 26 members will be able to proudly lay claim to crafting the MGM National Harbor resort from the ground up.

